

NORTHGATE

CORNMARKET STREET
OXFORD



Up to 18,000 sq ft new retail space in
prominent state of the art building

CULTURAL & HISTORIC

The historic City of Oxford is internationally renowned as a centre for education, arts, science, technology and innovation. It is a diverse, vibrant and cosmopolitan City with 40,000 students, 150,000+ residents, as well as 7 million tourists visiting each year and is also known for its spectacular architecture, the famous 'dreaming spires'.



Blackwells



Radcliffe Camera



The Covered Market



Vaults & Garden



Bonn Square



Turl Street



Malmaison Hotel



Tom Tower



Franco Manca



VIBRANT CORNMARKET

At the heart of the City's retail core is Cornmarket Street, surrounded by quaint streets, a broad mix of restaurants and prime retail, The Covered Market and numerous colleges. Northgate will sit prominently at the centre of this busy and exciting destination.



Carfax Tower



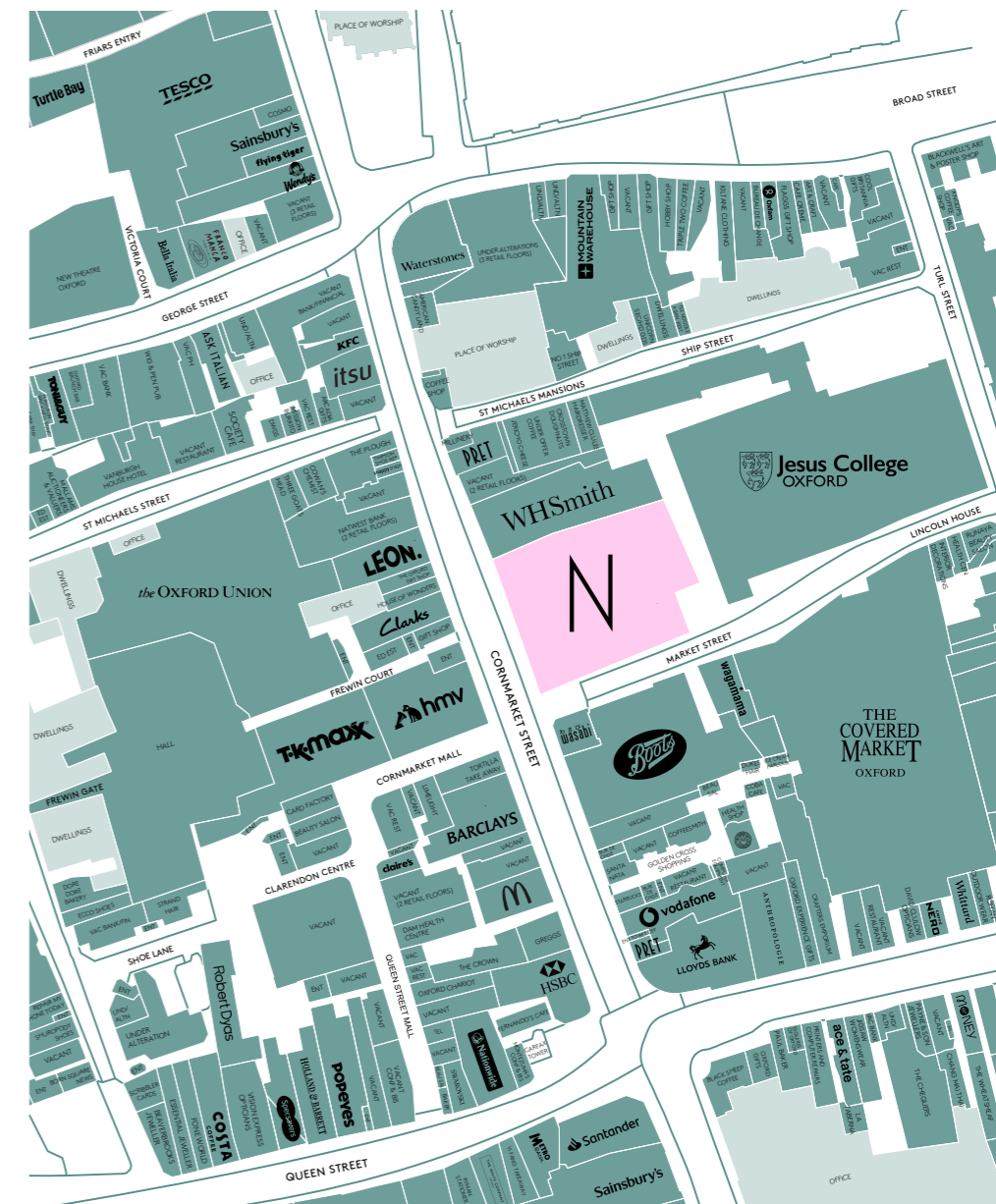
Bird Blend Tea Co.



L'Occitane



Cornmarket St



Local GOAD map



Anthropologie



Jesus College



Waterstones



View facing East on Cornmarket St

GROUND FLOOR

9,034 sq ft

839 sq m

Retail Unit 1 - Under offer
608 sq ft / 56.5 sq m

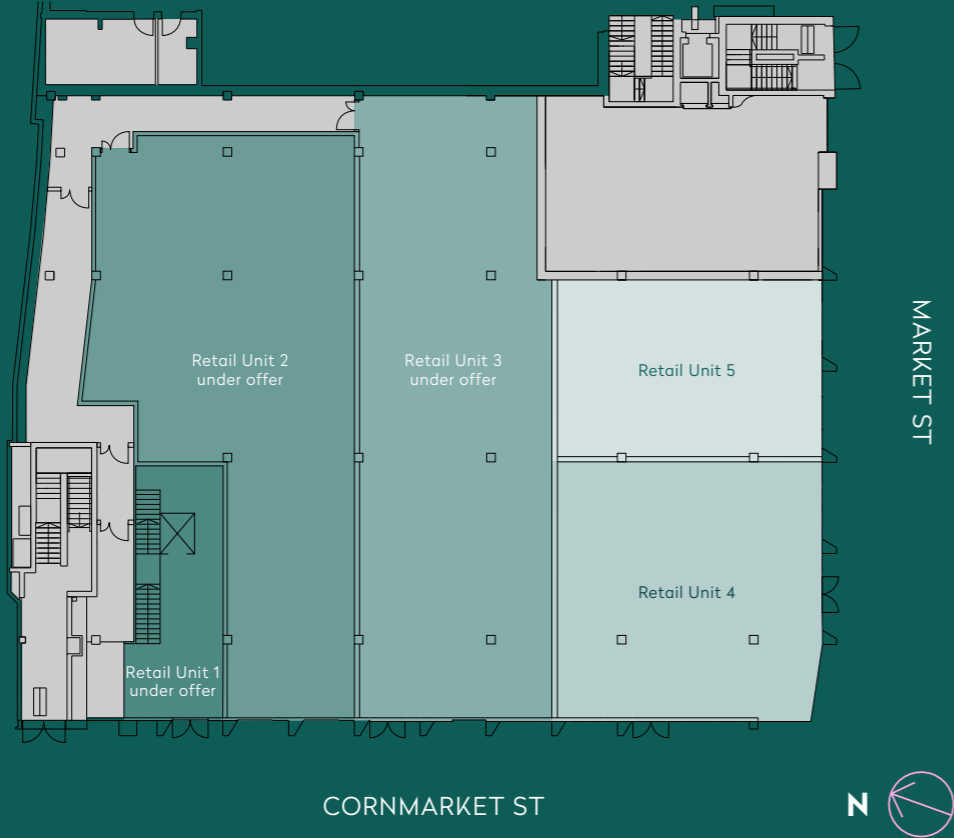
Retail Unit 2 - Under offer
2,998 sq ft / 278.5 sq m

Retail Unit 3 - Under offer
3,068 sq ft / 285 sq m

Retail Unit 4
1,749 sq ft / 162.5 sq m

Retail Unit 5
1,222 sq ft / 113.5 sq m

(Approximate GIA)



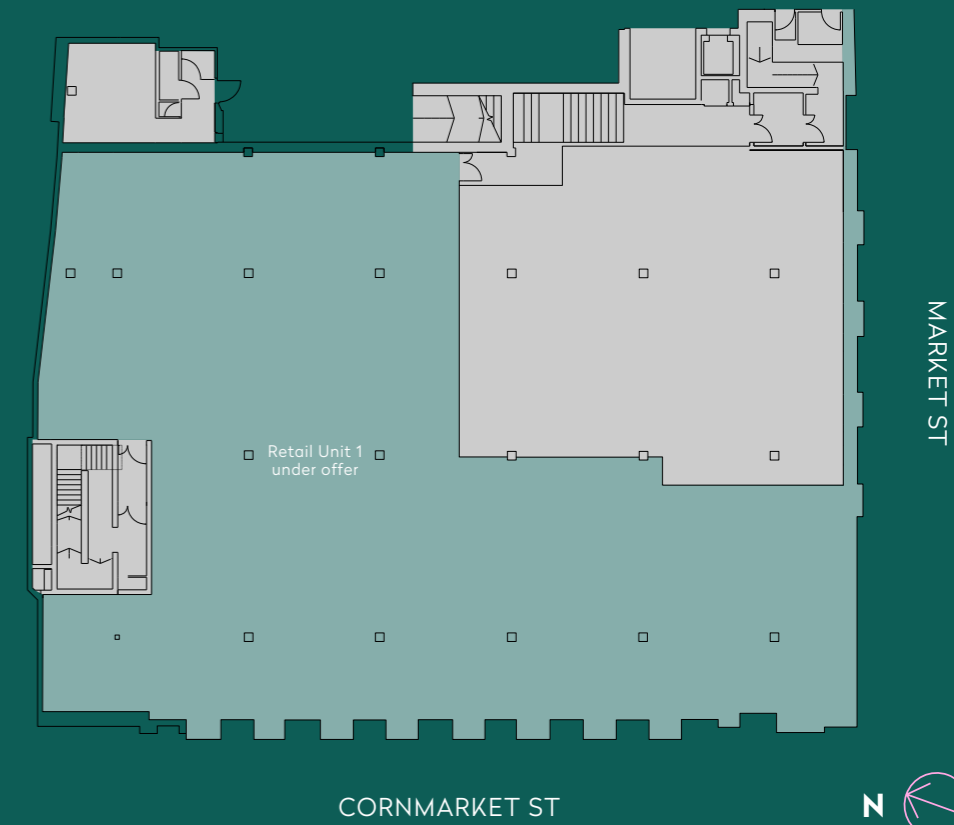
1ST FLOOR

8,073 sq ft

750 sq m

Retail Unit 1 - Under offer
8,073 sq ft / 750 sq m

(Approximate GIA)





Jesus College

OXFORD

The Cheng Yu Tung Building

Northgate is part of Jesus College's new Cheng Yu Tung Building,
which opened in Summer 2022.



Ian Kitchen

ikitchen@klm-re.com

07774 940 524

Dominic Brady

dbrady@klm-re.com

07584 025 810

James Williamson

jwilliamson@klm-re.com

07587 353 434

Misrepresentation Act 1967 & Property Misdescription Act 1991. These Particulars are believed to be correct but their accuracy is not guaranteed, are set out as a general guide and do not constitute the whole or part of a contract. All liability, in negligence or otherwise, arising from the use of the particulars is hereby excluded.

Design and production: www.stuartchapmandesign.co.uk 020 3983 1665
Building photography: ©Hufton+Crow